



CONFERENCE PROGRAM

AT THE UNIVERSITY OF OKLAHOMA

Table of Contents

Introduction	3
--------------	---

Welcome

Conference Resources	4
----------------------	---

Campus resources

Campus Corner

Parking & Maps

Printing & WiFi

Schedule of Events	11
--------------------	----

Friday Events

Saturday Events

Poster Presenters

Technical Presentations Presenters

Jeoapary Preliminary Rounds

Industry Tours Information	19
----------------------------	----

Sponsors	20
----------	----

Special Thanks	21
----------------	----

Contact Info	22
--------------	----

Welcome

On behalf of the American Institute of Chemical Engineers at the University of Oklahoma, we thank you for attending the 2025 Mid America Regional Conference. We sincerely hope this conference will allow you to connect with each other in building professional relationships, learn new technical skills, network with employers, present your research, and be rewarded for your hard work.

This guide includes general conference information such as schedule of events, campus maps and various amenities available to you.

For more information, please contact aiche@ou.edu or our Conference Chair Mandisa Masonya at mandisa.k.masonya@ou.edu.



Conference Resources

Conference GroupMe



Join our GroupMe for Conference updates and to ask any questions.

OU Campus Resources

OU PD, Campus Police

Non-emergencies

Phone: 405 325 1717,

Email: oupd@ou.edu,

Emergencies: 911

Goddard Health Center

Phone: 405 325 4611

Email: healthservices@ou.edu

OU Cart - Campus Bus Shuttles

Bus Schedules:

<https://www.ou.edu/cart/maps>

Norman On Demand

\$2 Public Transportation around Norman. Scan the QR code to download the app.



Conference Resources

Printing

OU Information Technology offers campus-wide cloud printing services to students, faculty, staff, and visitors. This service allows users to print to the cloud and pick up documents at any conveniently located wēpa kiosk. You can print directly to wēpa kiosks from any OU IT computer lab or OU Libraries desktop computer. You can release your documents from any kiosk by paying with:

- wēpa Account – Upload credit at kiosk or online at wēpa's website.
- Venmo/Paypal – Upload credit through the wepa Mobile App.
- Credit Card – Securely pay with a credit or debit card.*

*Credit / debit card transactions carry an additional \$0.40 per print job convenience fee that is assessed by the credit card company.

Kiosk Locations

Bizzell Library – LL1, Main Floor
Devon Hall
S.J. Sarkeys Complex
OCCCE Forum
Sarkeys Energy Center

Carson Engineering Center
Felgar Hall
Gallogly Hall
Rawl Engineering Practice Facility
Union – Computer Lab

Wi-Fi

OUguest is a wireless network intended to be used by guests and visitors to the University for short periods of time. It has limited access to the OU network and internet. To connect to OUGuest, you need to:

- Click on the wireless icon located in the system tray in the lower right corner close to the clock.
- Click on OUGuest to expand the menu.
- Click Connect.

Campus Corner

Food

Crossed Cannons
Fuzzy's Taco
Hideaway Pizza
ISushi
Mamaka Bowls
New York Pizza & Pasta
Othello's Italian Restaurant
Pepe Delgados
Pinkberry
The Porch
Raising Cane's Chicken Fingers
Second Wind Coffee House
Tea Cafe
The Tower Energy & Nutrition
Volare
Yo Pablo!
BreakRoom Nutrition
Cafe Saffron
Chipotle
Cupbob - Korean BBQ in a cup
The Deli
Fat Shack
Insomniac
Jimmy John's
Logies on the corner
Moge Tea
Pho House
Pickleman's Gourmet Cafe
Rikos Taco
Starbucks
The Surf Bar
Sweet Sips & Sticks
Thai Delight

Night life

Heist
Louie's Bar & Grill
Maverick's
Nompton Social
O'Connell's Irish Pub & Grill
Sideline Bar & Grill

Shopping

Balfour of Norman
Blush
Campus Corner Market
Lucca
Thrift shop by First Pres.
Church

Other Services

Armstrong Bank
Diversity Family Health
I-Drive Transportation & Taxi
Services
Midfirst Bank
Chase Bank



<https://oucampuscorner.com/>

Parking

Purchasing Visitor Permits

With the Lloyd Noble Center being the only exception, all areas of campus require a valid OU parking permit Monday through Thursday from 7am to 9pm and Friday from 7am to 4:30pm. OU parking permits are not needed on the weekends as OU Parking Services does not ticket on the weekends. Visitor permits may be purchased in-person at the Parking Office or online for \$3 per day.

Please remember that your visitor permit must be clearly displayed to be considered valid.

Parking with Your Visitor Permit

Visitor permits are one of the most versatile permits that OU Parking Services offers, allowing you many parking options:

- Your visitor permit allows you to park in any visitor spaces, student spaces, and even faculty/staff spaces.
- Visitor permits do NOT allow you to park in spaces marked "Reserved" or "Special Permit", disability spaces (unless you have a valid state-issued placard), loading zones, and fire lanes.

-

Parking in Metered/Pay Station Spaces

Parking at a meter/pay station is another option visitors have and a permit is not required as long as the pay station is paid. The rate for a pay station is \$1.50/ hour, and may be paid at the station by coin, or card, or by using the Flowbird Parking app.

Free Visitor Parking

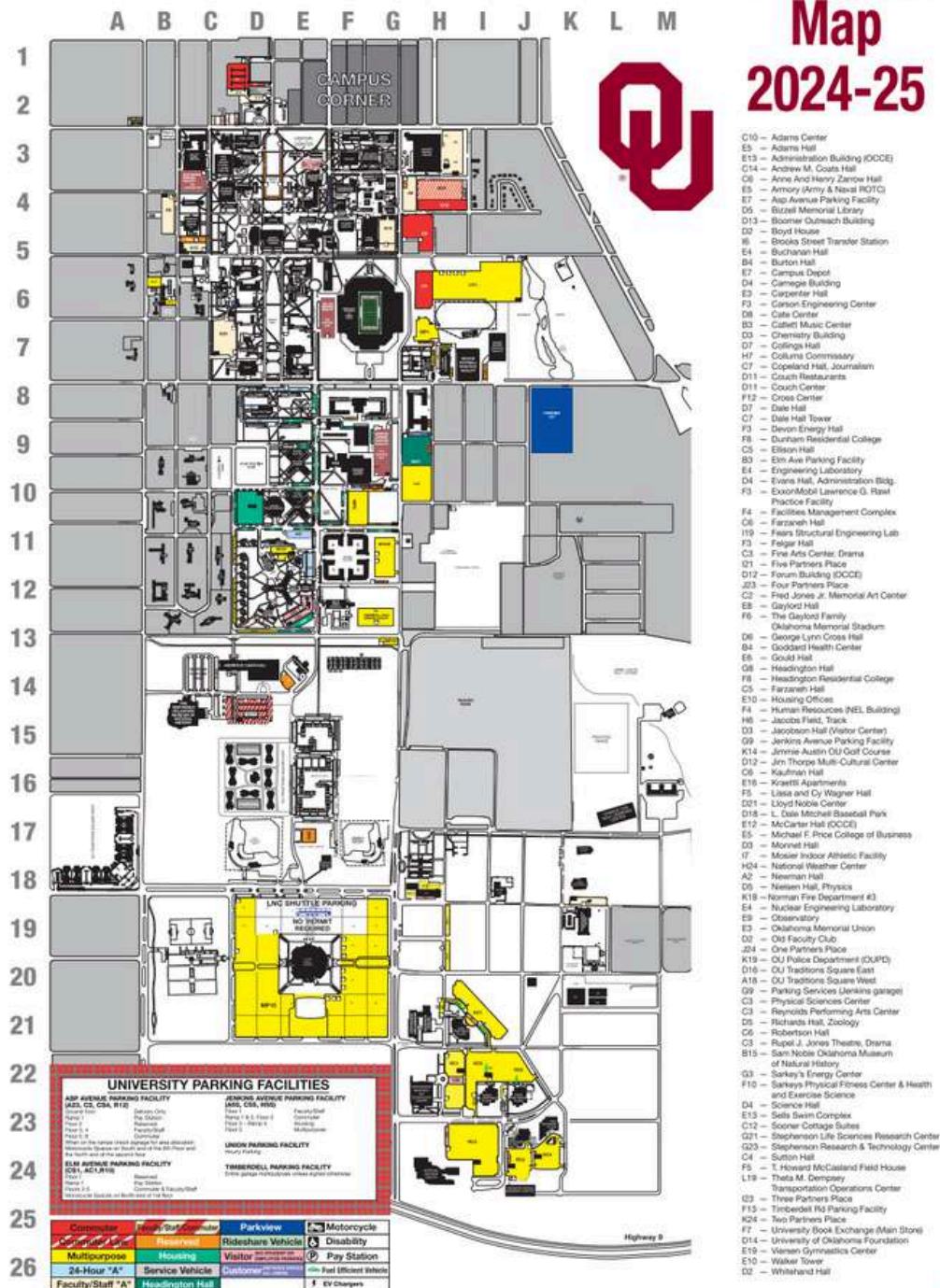
Monday through Friday, visitors coming to campus may park at the Lloyd Noble Center for free and ride the free shuttle to campus and back. The hours for this service are from 7:00am - 9:45pm, Monday through Friday.

For more information, please contact OU Parking Services at (405)-325-3311 or by emailing parking@ou.edu.

Parking

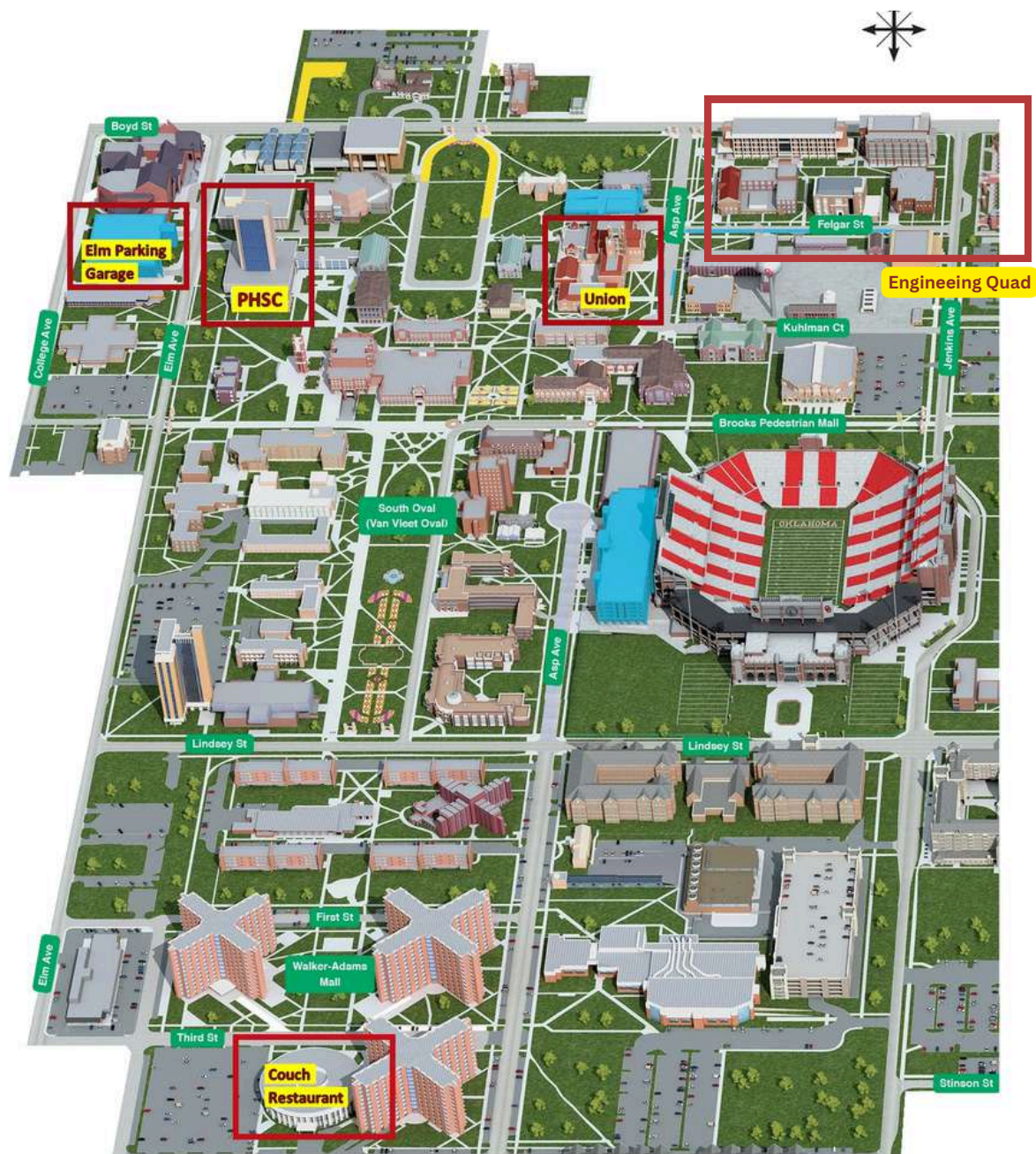
The University of Oklahoma

Parking Map 2024-25



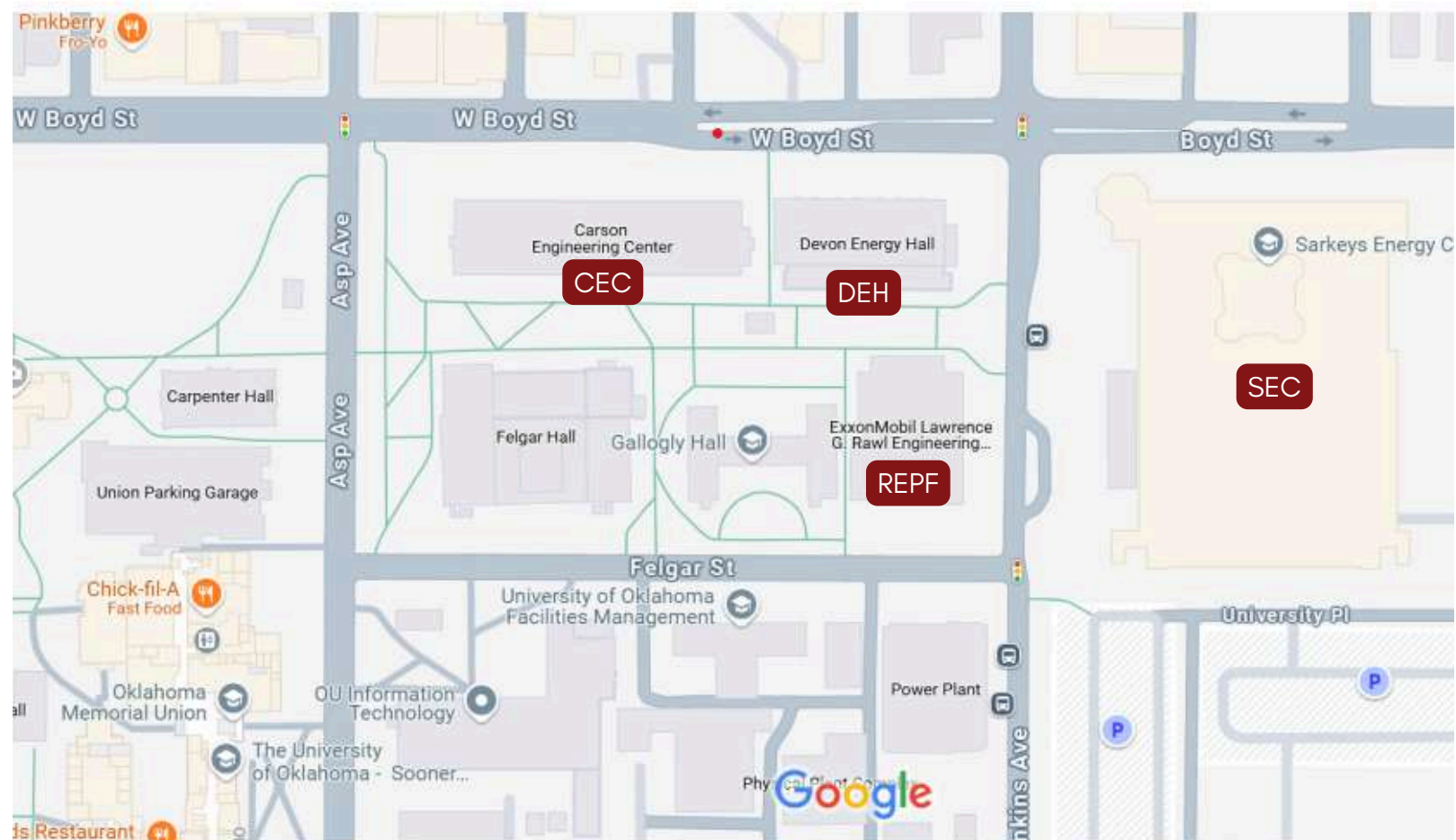
Maps

University of Oklahoma Campus Map



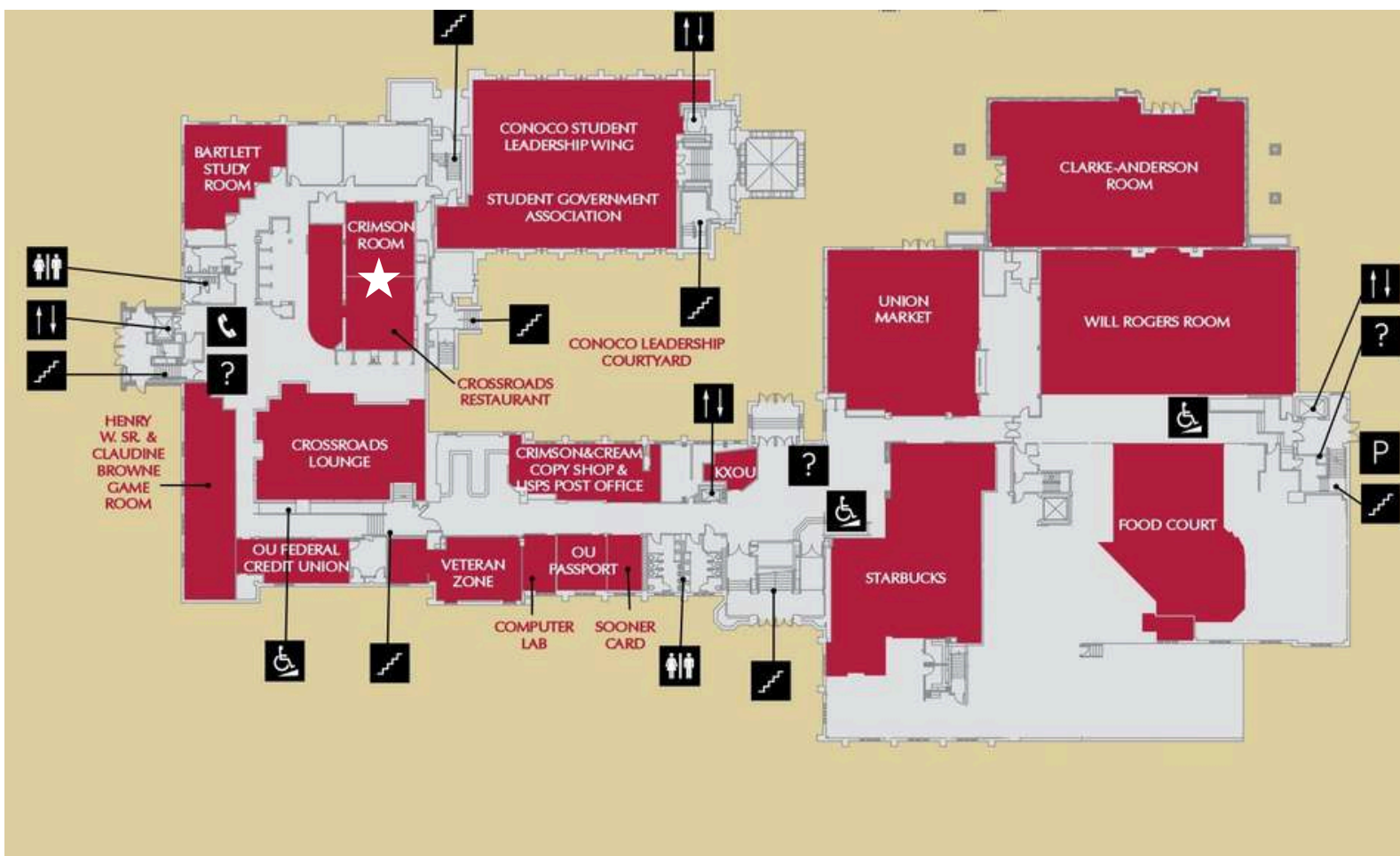
Maps

Engineering Quad



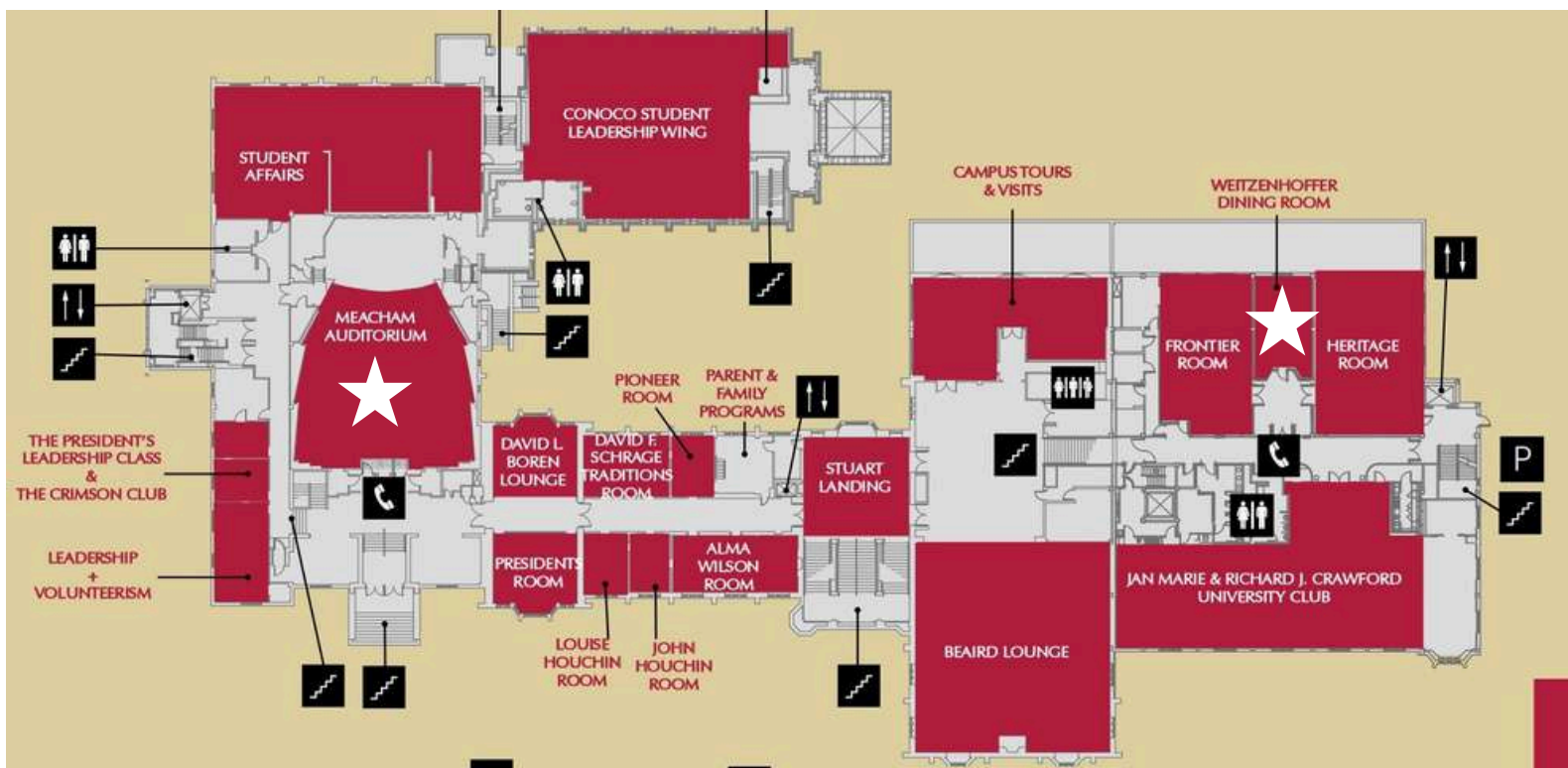
Maps

Oklahoma Memorial Union - Level 1



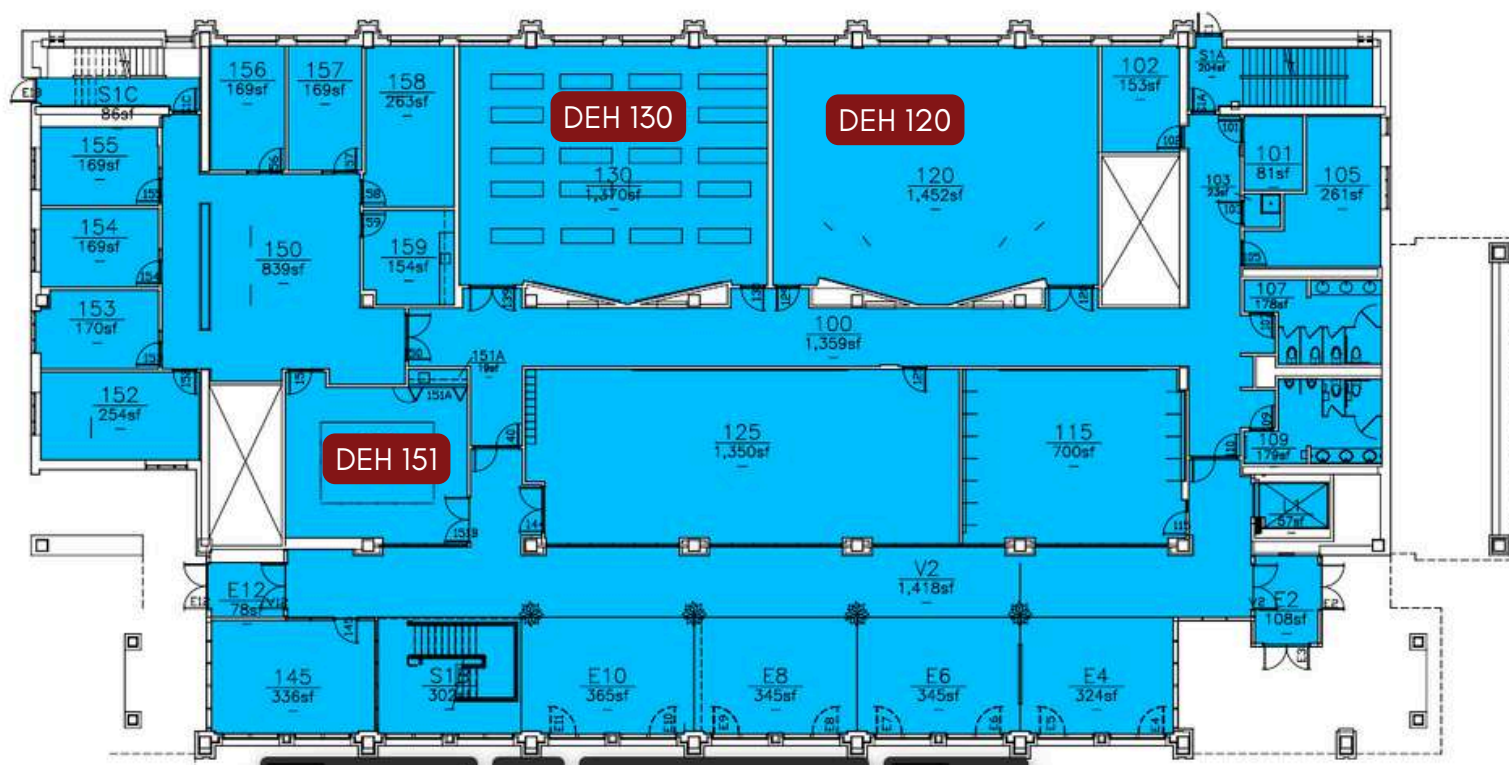
Maps

Oklahoma Memorial Union - Level 2



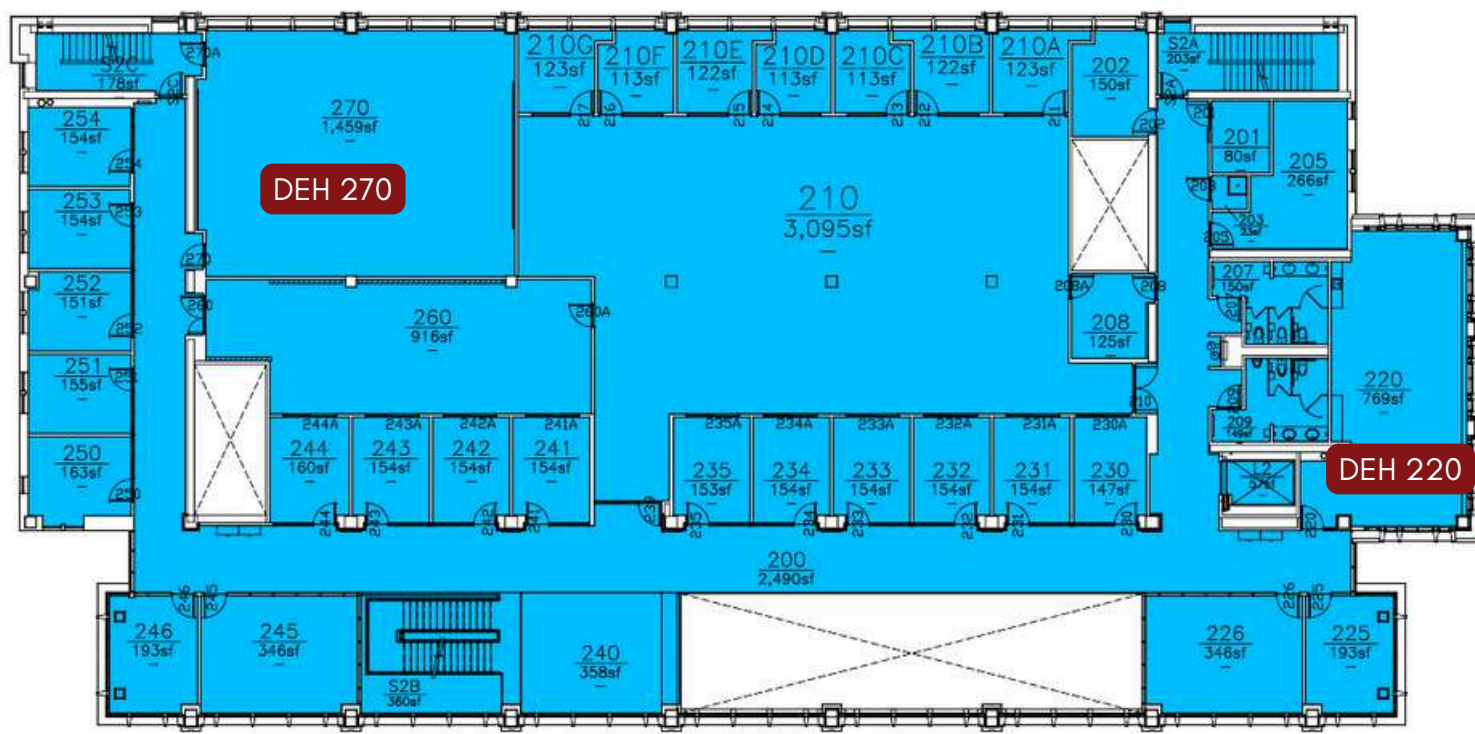
Maps

Devon Energy Hall - Level 1



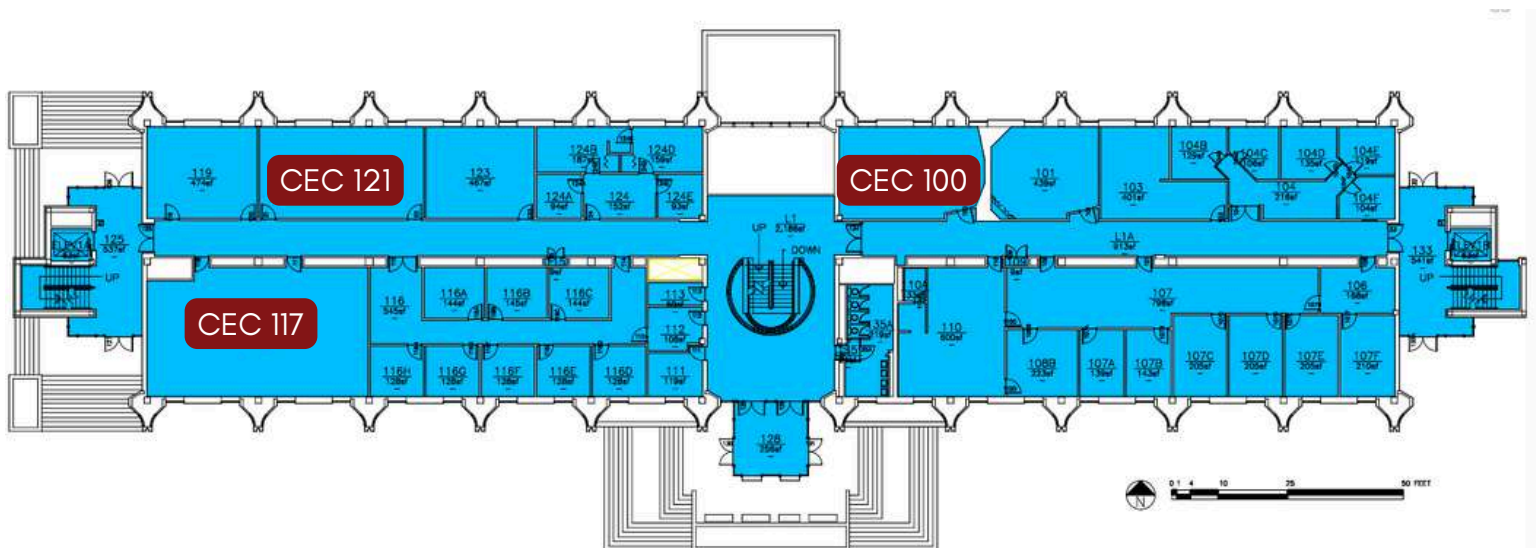
Maps

Devon Energy Hall - Level 2



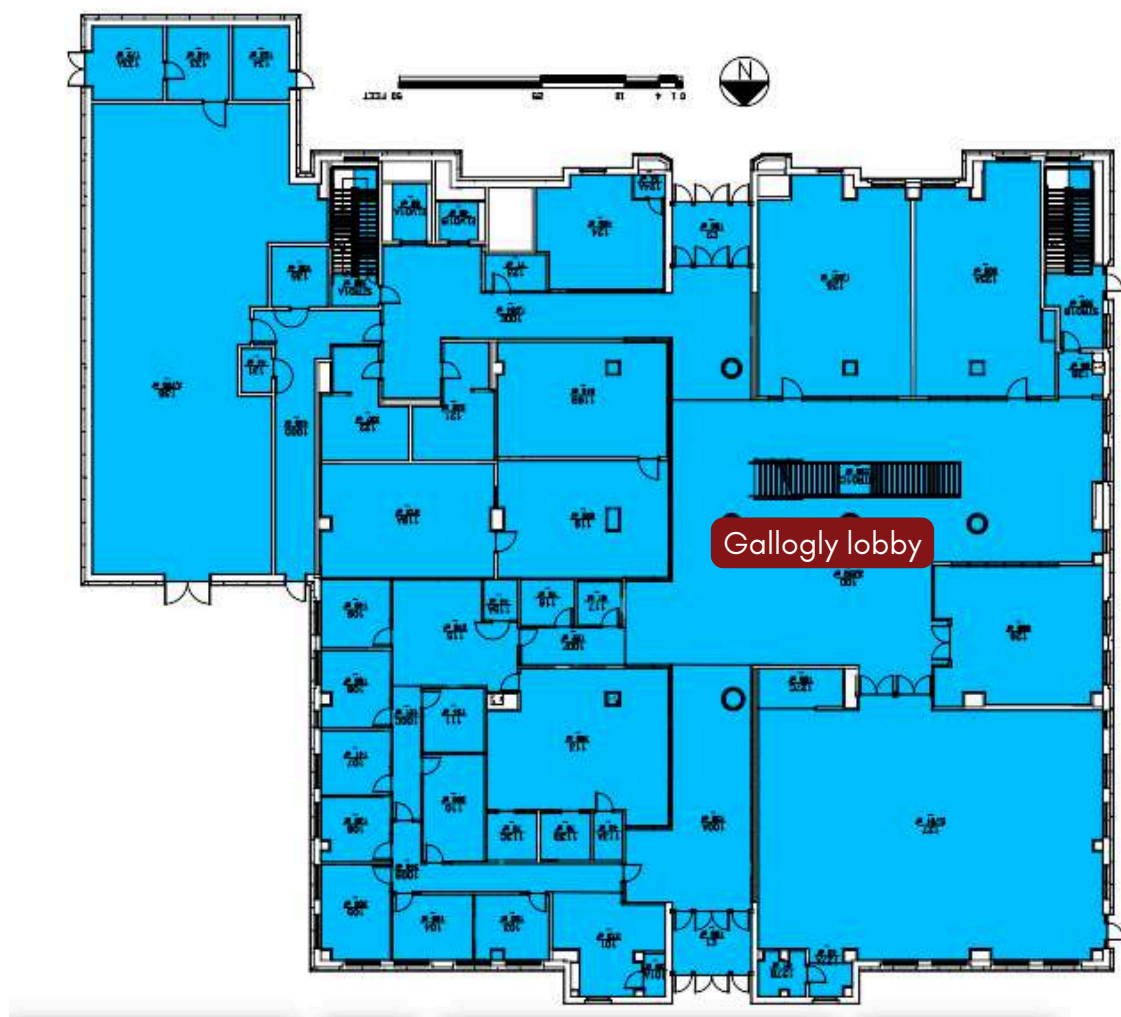
Maps

Carson Energy Center - Level 1



Maps

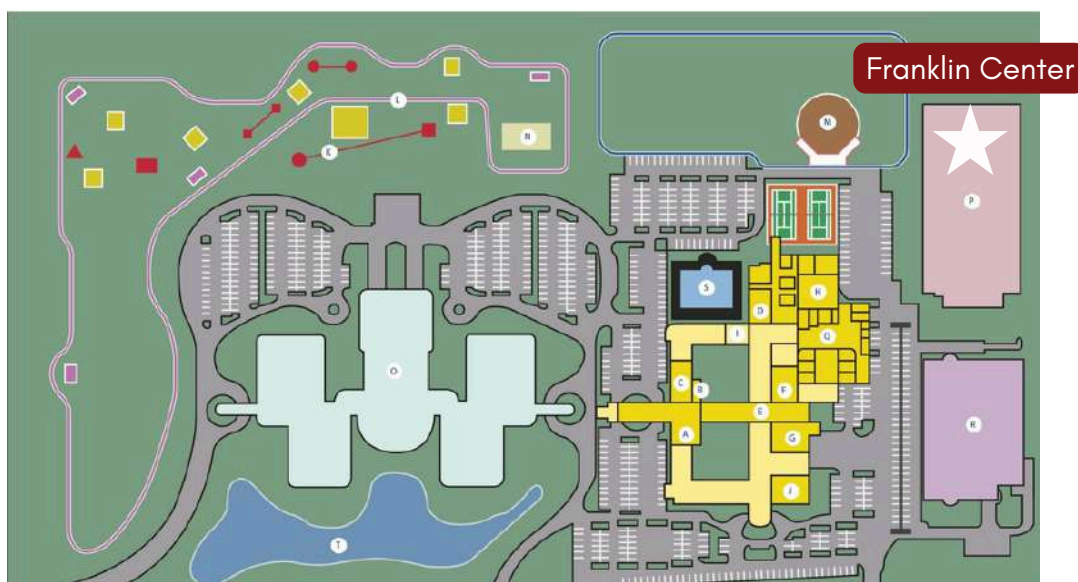
Gallogly Hall - Level 1



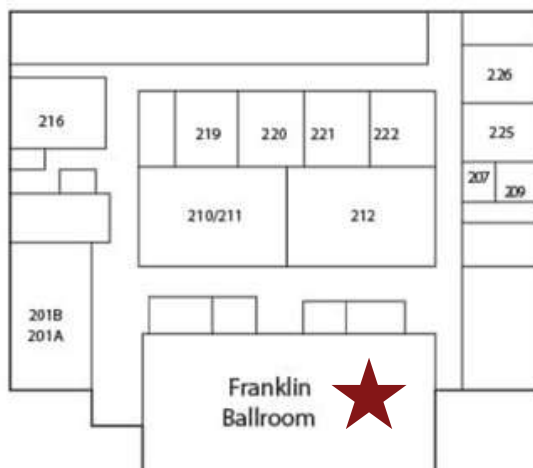
Maps

NCED- Conference Center and Hotel

2801 OK-9, Norman, OK 73071



FRANKLIN
CENTER /



Schedule of events

Friday, 11th of April

1:00 - 6:00 PM

Check in & Registration

*Oklahoma Memorial Union -
Crimson Room*

2:30 - 4:30 PM

Industry Tours

*Norman Water Facility
Cytovance Biologies Inc.
See Tours Page for Sign-up
Details and Addresses*

7:00-10:00 PM

Chem E car Safety Inspection

NCED - Franklin Ballroom

5:00 - 6:30 PM

Dinner & Opening Keynote

*Oklahoma Memorial Union-
Meacham Auditorium
Speaker - Dr. John Klier*

8:00 - 10:00 PM

Social Mixer - Movie Night

*South Oval - CAC film
series: Student film festival
see CAC Instagram: @cacfilmseries
for movie options*

Schedule of events

Saturday, 12th of April

All Day

Student Lounge

Gallogly Hall Lobby - opens at 8 am, Snacks and water provided

Judges Lounge

DEH 151 - opens at 9am, snacks and water provided

7:00 - 11:30 AM

ChemE Car Prep

NCED - Franklin Ballroom

Safety meeting - 7:00 AM

Announcements - 9:00 AM

Call to starting line - 9:55 AM

ChemE Car Competition

NCED - Franklin Ballroom

8:00 - 10:00 AM

Registration

Gallogly Hall Lobby

11:30 - 12:30 PM

Lunch hour

Individual, See Recommendations

12:30 - 1:30 PM

President's Meeting

CEC 100

Chapter Presidents & Faculty advisors

Networking Fair

Gallogly Hall Lobby

Iowa State University, Devon Energy, Midcon GPA, OU Grad programs

Schedule of events

Saturday, 12th of April

1:30 - 3:30 PM

Poster Competition

DEH Atrium

3:30 - 6:30 PM

ChemE Jeopardy

Room 1 - DEH 130

Room 2 - DEH 120

Room 3 - DEH 270

Room 4 - DEH 220

1:30 - 4:30 PM

Technical Presentations

Room 1 -CEC 117

Room 2 - CEC 121

7:30 - 9:00 PM

Awards Banquet

Oklahoma Memorial Union -

Frontier and Heritage Rooms

Industry Tours

Norman Water Facility

Friday, 11th of April

2:30 - 4:00 PM

3500 E Jenkins Ave, Norman, OK 73072

Tour and Q&A

Cytovance Biologics

Friday, 11th of April

Group 1 - 3:00 PM

Group 2 - 3:15 PM

800 Research Parkway, Ste 200, Oklahoma City, OK 73104

14 spots/group

Industry Tours Signup form



Sponsors

This conference is made possible by:



Special thanks

Conference Planning team

Mandisa Masonya
Aditi Gali
Chrisbeth Castaneda
Tim Johanson

Chapter Advisor

Paul Huang

OU AIChE Officers

EllieGrace Cooper
Jazmine Whitfield
Harold Ly
Riley Weber
Emily Stark
Sophie Guy
Keen Nguyen

OU Chemical Engineering Faculty

AIChE Representatives

Judges, Volunteers and Attendees!

Contact Info

Aditi Gali

President/Research Chair

Email: aditi.gali@ou.edu

Mandisa Masonya

Conference Chair

Email: mandisa.k.masonya@ou.edu

Tim Johanson

Chem E Car Chair

Email: timothy.d.johanson-1@ou.edu

Chrisbeth Castaneda

Jeopardy Chair

Email: cvcastaneda@ou.edu

Paul Huang

Chapter Advisor

Email: hll@ou.edu

Chapter Contacts

Email: aiche@ou.edu

Instagram: [@aiche.ou](https://www.instagram.com/aiche.ou)